

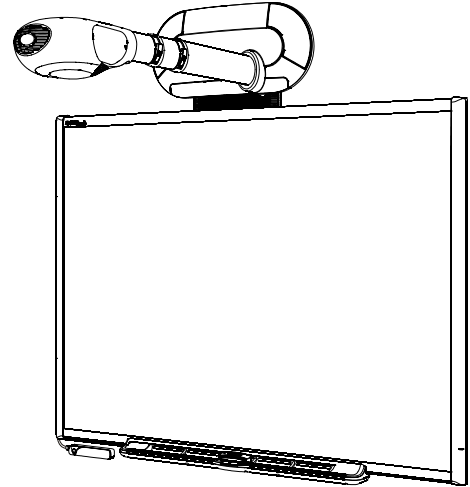
SMART Board™ Interactive Whiteboard System

Specifications – Model 660i

Physical Specifications

Unifi™ 35 Projector

| | |
|----------------------------------|--|
| Size | 25 7/8" W × 14 3/8" H × 41 1/2" D (Max.) (65.7 cm × 36.5 cm × 105.4 cm) |
| Extended Connection Panel | 7 5/8" W × 1 1/4" H × 1 3/8" D (19.4 cm × 3.2 cm × 3.5 cm) |
| Weight | 33 lb. (15.0 kg) |
| Shipping Weight | 52 lb. (23.6 kg) |
| Shipping Size | 30" W × 19" H × 45" D (76.2 cm × 48.3 cm × 114.3 cm) |



SMART Board™ 660 Interactive Whiteboard

| | |
|---|---|
| Size | 54 3/4" W × 41 5/8" H × 5 1/8" D (139.2 cm × 105.8 cm × 13.0 cm) |
| Active Screen Area (maximum interactive, projected image) | 51 1/4" W × 38 1/4" H (130.2 cm × 97.2 cm) 64" diagonal (162.6 cm) |
| Weight | 21 lb. 14 oz. (9.9 kg) |
| Shipping Weight | 35 lb. (15.9 kg) |
| Shipping Size | 46" W × 64 1/2" H × 5 1/2" D (116.8 cm × 163.8 cm × 14.0 cm) |

All dimensions +/- 1/8" (3.2 mm). All weights +/- 2 lb. (0.9 kg).

Standard Features

| | |
|--------------------------------------|---|
| Software | SMART Board software and Notebook™ software. Software upgrades are available at www.smarttech.com/support/software/index.asp . |
| Certifications and Compliance | UL (Canada/U.S.), CE, FCC, PSE, VCCI, NOM, RoHS (China), RoHS (Europe), WEEE. |
| Warranty | Two-year limited equipment warranty on the projector, control module and extended connection panel. The projector lamp has a 500 hour/90 day warranty. The interactive whiteboard has a five-year limited equipment warranty upon registration. See warranty documents for details. |
| Mounting Template | Template ensures a simple installation and accurate alignment between the Unifi 35 projector and your SMART Board 660 interactive whiteboard. Use in place of the installation instructions provided with the interactive whiteboard. |
| Cables | 6' (1.8 m) HD-DB15 male-to-male video, 9' 10" (3 m) DVI-I to HD-DB15 male video, 6' (1.8 m) 3.5 mm stereo audio, and 6' (1.8 m) and 16' (5 m) USB cables provided. |

Interactive Whiteboard Features

| | |
|------------------------|--|
| Pen Tray | Optical sensors in the pen tray detect when you lift a pen or the eraser from the tray. LEDs show the active tool. |
| Pens and Eraser | Black, blue, red and green pens and a rectangular eraser |
| Resolution | Touch resolution is approximately 4000 × 4000. |

Specifications – Model 660i

| | |
|----------------------------------|---|
| Screen Surface | The hard-coated polyester surface is tear proof, optimized for projection, compatible with dry-erase markers and easily cleaned with whiteboard cleaner. |
| Digitizing Technology | Resistive |
| Frame Finish | Two-tone gray (approximates Pantone® Charcoal Gray 18-0601 TPX) and Ultrasonic Chrome (approximates metallic Pantone 877 C) |
| Wall-Mount Bracket | 32" (81.3 cm) wide with five screws and drywall anchors to support the interactive whiteboard. |
| Installation Instructions | Do not use when installing the 660i system. The installation instructions are for interactive whiteboard installations that do not include the Unifi projector. |

Unifi 35 Projector Features

| | |
|---------------------------------|--|
| On-Screen Interface | Includes interactive tools for controlling the projector, making notes over projected images and saving ScratchPad pages to a USB storage device. |
| Projector Head | Includes a focus ring and a side-mounted access door for changing the lamp. |
| Display Type | True XGA (1024 × 768) projector |
| Display Technology | Projection engine does not require cleaning or filter replacement. The projection engine uses DLP® technology by Texas Instruments® and features Vikuiti™ Super Close Projection technology from 3M. |
| Brightness | 1500 ANSI lumens, typical |
| Lamp Life | 2000 hours (Standard mode), 3000 hours (Economy mode) |
| Aspect Ratio | 4:3 native, with support for 16:9 |
| Contrast Ratio | 1000:1 (FO/FO) (minimum) |
| Video Compatibility | NTSC/PAL/SECAM/Composite/S-video/Component (YPbPr/YCbCR)/SDTV (480i, 576i)/EDTV (480P, 576P)/HDTV (720P, 1080i) VGA/SVGA/SGA/SXGA/MAC/(UXGA) |
| Synchronization | Auto image synchronization (auto tracking/frequency/position adjustment/source detect/phase detect) |
| Scanning Rate | H-sync 15 kHz–82 kHz, V-sync 50 Hz–85 Hz |
| Color | True color (16.7 million 24-bit colors) |
| Audio System | Integrated stereo amplifier and speakers (20 watts per channel) |
| Mounting Hardware | Hardware supplied for mounting the Unifi projector and the extended connection panel to framed and concrete walls. |
| Input/Output Connections | DVI-I jack - analog or digital projector video input HD-DB15 jack - RGB video from computer, linked to extended connection panel Two 3.5 mm stereo jacks - audio inputs, one linked to extended connection panel 3.5 mm stereo jack - audio output Mini DIN 4-pin connector - S-video input, linked to extended connection panel RCA jack - composite video input, linked to extended connection panel Two RCA jacks - stereo audio input, linked to extended connection panel Three RCA jacks - component video input Two USB A receptacles - one for USB storage device, linked to extended connection panel - one for USB link to interactive whiteboard USB B receptacle - computer data connection, linked to extended connection panel DB9F - serial (RS-232) computer or external control system connection Power reset connector - linked to extended connection panel Reset button AC power receptacle - accepts standard IEC power cable or adapter |

Specifications – Model 660i

| | |
|---------------------------|--|
| Projector Noise | 34 dBA (Standard mode) / 32 dBA (Economy mode) |
| Power Requirements | 100V–240V AC 50/60 Hz, 450 W |
| Power Switch | Master power control switch |
| Power Cable | Three 14' 9" (4.5 m) power cables provided (U.S., UK and Europe) |
| External Control | RS-232 input configured to accept control codes from computer or room control system |
| Power Consumption | 450 W maximum |
| Remote Control | Provides an alternate method of controlling the 660i system's major features |

Extended Connection Panel Features

| | | |
|---------------------------------|--|-------------------------------------|
| Input/Output Connections | HD-DB15 jack | - RGB computer video input |
| | 3.5 mm stereo jack | - computer audio input |
| | USB A receptacle | - connection for USB storage device |
| | RCA jack | - composite video input |
| | Two RCA jacks | - stereo audio inputs |
| | Mini DIN 4-pin connector | - S-video input |
| | USB B receptacle | - computer data input |
| Power Button | Turns the Unifi projector and interactive whiteboard on or off | |

Control Module Features

| | |
|-----------------------|--|
| Power Button | Large power button, with illuminated status ring, turns the system on or off |
| Menu Button | Shows and hides the Unifi projector's on-screen interface |
| Volume Control | Adjusts the integrated audio system's volume |

Storage and Operating Specifications

| | |
|------------------|--|
| Storage | -22°F to 122°F (-30°C to 50°C) with 90% humidity, non-condensing |
| Operation | from 0' to 2500' (0 m to 762 m) 50°F to 95°F (10°C to 35°C) with 20–80% humidity, non-condensing |
| | from 2500' to 5000' (762 m to 1524 m) 50°F to 86°F (10°C to 30°C) with 20–80% humidity, non-condensing |
| | from 5000' to 10000' (1524 m to 3048 m) 50°F to 77°F (10°C to 25°C) with 20–80% humidity, non-condensing |

SMART Board Software 9.7 Computer Requirements

| | |
|--|---|
| Windows® Computers | Pentium® II 450 MHz processor 256 MB of RAM (512 MB recommended) 150 MB of free hard disk space for minimum installation (840 MB for full installation with Gallery collections) Windows 2000, Windows XP or Windows Vista™ operating system Internet Explorer® internet browser 6.0 or later Adobe® Flash® player version 8 |
| Requirements for SMART Video Player | Pentium II 450 MHz processor (700 MHz or faster recommended) Windows 2000 operating system or later Microsoft® DirectX® technology 8.1 or later |

Specifications – Model 660i

| | |
|------------------------|--|
| Mac Computers | 700 MHz processor (1 GHz or faster recommended) PowerPC® G3, G4 or G5 processors and Intel® processors (universal binary) 256 MB of RAM (512 MB recommended) 85 MB of free hard disk space for minimum installation (825 MB for full installation with Gallery collections) Mac OS X version 10.4.x operating system software Safari application program version 1.3.2 or later |
| Linux Computers | Pentium II 450 MHz processor 128 MB of RAM (256 MB recommended) 225 MB of free hard disk space for minimum installation (800 MB for full installation with Gallery collections) Linux kernel version 2.6 or later X Window System™ version 11 release 6 (X11R6) or later (must support XRender, Xinerama™, XFixes, Xau and Xdmcp) glibc 2.3.3 (gcc 3.4.2) libstdc++6 GNOME™ 2.8.0+ or KDE® 3.3+ libraries (recommended) SUSE™ 10, Red Hat® Enterprise Linux 4 WS, Debian® 3.1 (Sarge), Ubuntu® 6.06 LTS or Fedora™ Core 3+ |

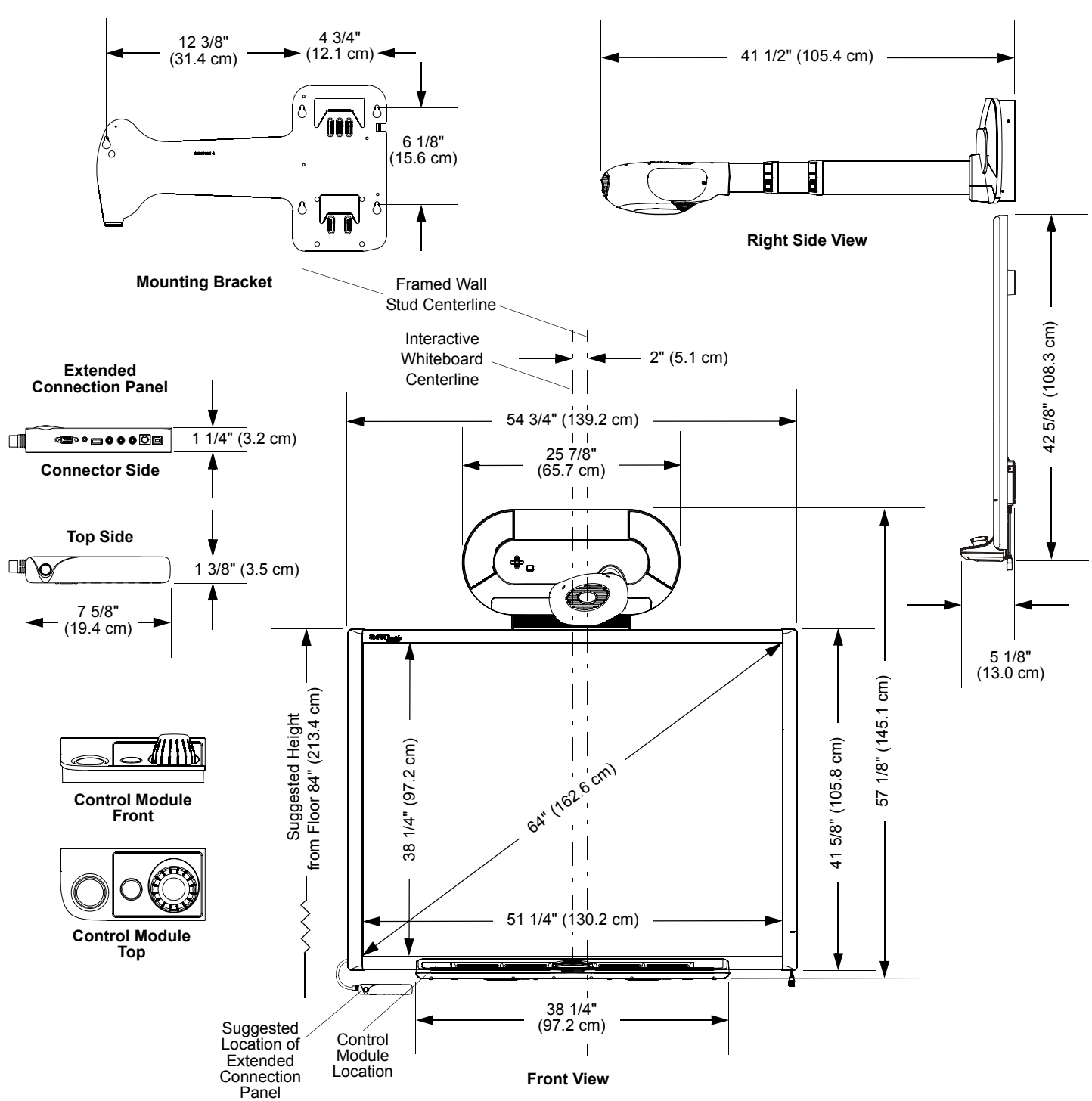
Optional Accessories

| | |
|----------------|---|
| USB-XT | 16' (5 m) USB active extension cable |
| CAT5-XT | USB to Cat 5 cable extender set, includes two 6' (1.8 m) USB cables |
| RPEN-ER | Replacement set of four pen tray pens (black, red, blue and green) and a rectangular eraser |
| RPEN | Replacement set of four pen tray pens (black, red, blue and green) |
| USB-GW | GoWire™ SMART Board software auto-launch USB cable |

SMART Order Number

| | |
|-------------|--|
| 660i | SMART Board 660i interactive whiteboard system includes a SMART Board 660 interactive whiteboard integrated with a Unifi 35 projector. |
|-------------|--|

Physical Dimensions



www.smarttech.com/support www.smarttech.com/contactsupport
 Support +1.403.228-5940 or Toll Free 1.866.518.6791 (U.S./Canada)

© 2006–2008 SMART Technologies ULC. All rights reserved. Unifi, SMART Board, Notebook, GoWire, smarttech and the SMART logo are trademarks or registered trademarks of SMART Technologies ULC in the U.S. and/or other countries. Windows is a registered trademark of Microsoft Corporation in the United States and other countries. All other third-party product and company names may be trademarks of their respective owners. Patent No. US5448263; US6141000; US6326954; US6337681; US6540366; US6741267; US6747636; US7151533; US7289113; and CA2058219. Other patents pending. Specifications are subject to change without notice. 03/2008.

